

## HMBTS High Movement Timber Frame Tie

The HMBTS type 7 timber frame wall tie is designed to connect the masonry outer leaf to a structural timber frame.

- Available is a range of sizes to suit cavities from 50mm to 150mm.
- The HMBTS can accommodate up to 65mm of vertical movement.
- Type 7 wall tie used in instances where the amount of required deflection exceeds that of the standard type 6 wall tie.

### Features

#### General Information

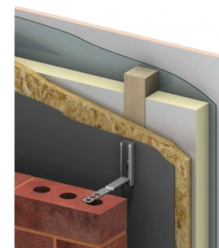
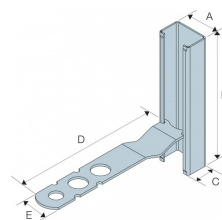
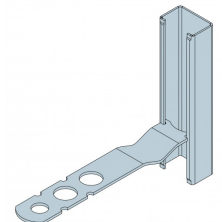
- Type 7 wall tie used in instances where the amount of required deflection exceeds that of the standard Type 6 wall tie.
- Available in a range of sizes to suit cavities from 50mm to 100mm.
- The HMBTS can accommodate up to 65mm of vertical movement
- CE Marked in accordance to EN845-1

### Material

**Austenitic Stainless Steel**

NEW

CE

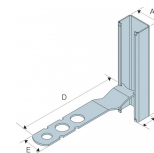


HMBTS Installed

HMBTS  
High Movement Timber Frame Tie

## Technical Data

Product Dimensions & Performance Values



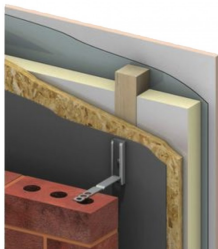
References	Cavity Width [mm]	Product Dimensions [mm]					Characteristic Capacities [N]	
		A	B	C	D	E	Ultimate Compressive Strength	Ultimate Tensile Strength
HMBTS50N	50	24	90	16	115	19	970	1210
HMBTS75N	75	24	90	16	130	19	970	1210
HMBTS100N	100	24	90	16	150	19	970	1210
HMBTS150N	150	24	90	16	200	19	970	1210

## HMBTS High Movement Timber Frame Tie

### Installation

#### Installation

- HMBTS is installed with the M6x50mm Stainless Steel Coach Screw (supplied)
- The channel is to be positioned onto the timber frame so that the coach screw is installed through the OSB sheathing and into the timber frame stud.
- Position the HMBTS so that when the tie is installed it sits 10mm to 12mm from the bottom of the channel.
- The density of ties required for the building is to specified by the buidling designer / structural engineer



*HMBTS Installed*

